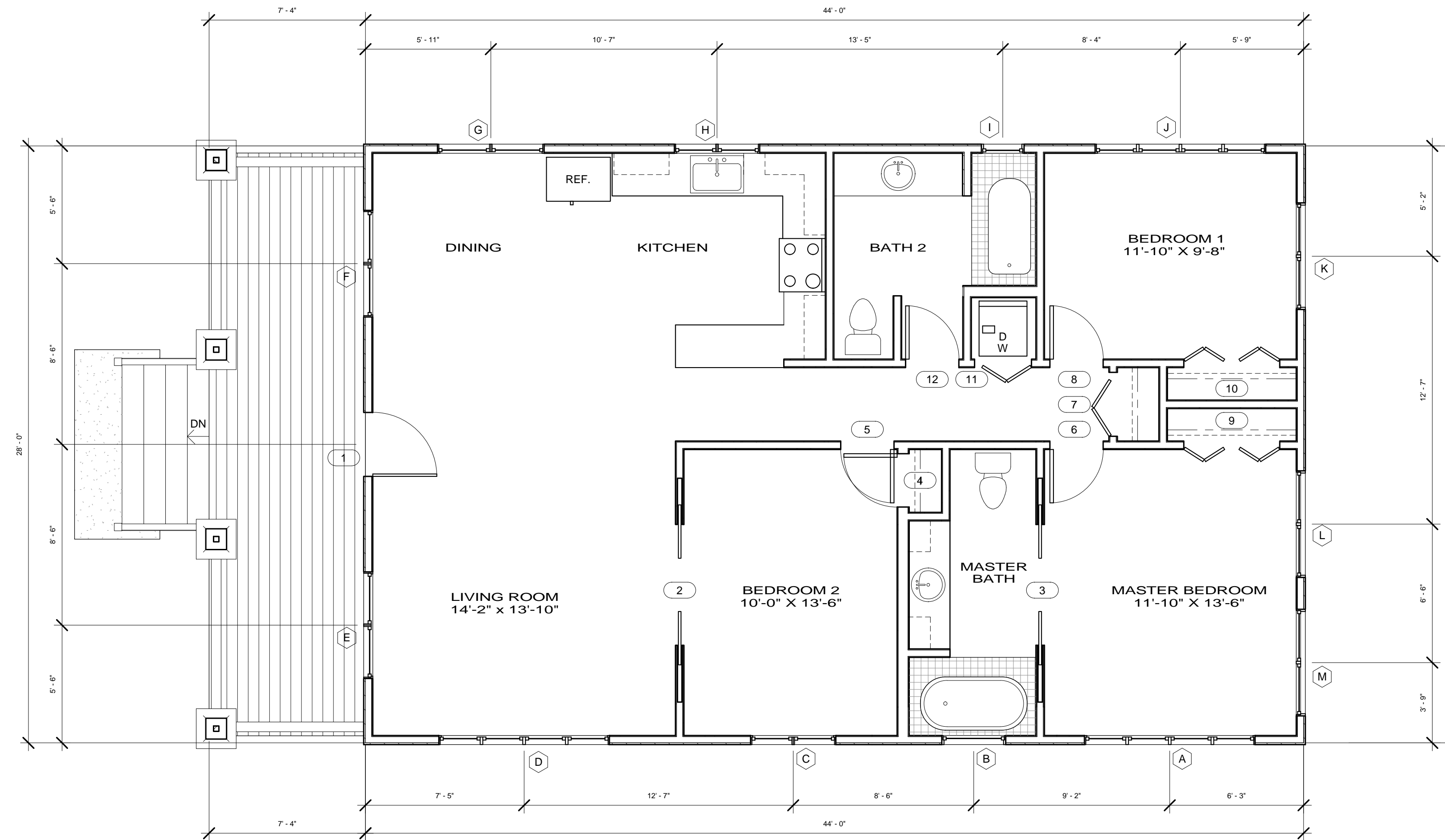




WINDOW SCHEDULE				
MARK	WIDTH	HT.	HEAD HT.	DESCRIPTION
A	8' - 0"	4' - 0"	6' - 8"	DOUBLE HUNG
B	3' - 0"	1' - 6"	6' - 8"	HOPPER
C	4' - 0"	3' - 0"	6' - 8"	DOUBLE HUNG
D	8' - 0"	4' - 0"	6' - 8"	DOUBLE HUNG
E	5' - 0"	4' - 0"	6' - 8"	DOUBLE HUNG
F	5' - 0"	4' - 0"	6' - 8"	DOUBLE HUNG
G	5' - 0"	3' - 6"	6' - 8"	DOUBLE HUNG
H	4' - 0"	3' - 0"	6' - 8"	DOUBLE HUNG
I	2' - 0"	1' - 6"	6' - 8"	HOPPER
J	8' - 0"	4' - 0"	6' - 8"	DOUBLE HUNG
K	5' - 0"	3' - 6"	6' - 8"	DOUBLE CASEMENT W/ CENTER GRILL, EGRESS
L	5' - 0"	3' - 6"	6' - 8"	DOUBLE CASEMENT W/ CENTER GRILL, EGRESS
M	5' - 0"	3' - 6"	6' - 8"	DOUBLE CASEMENT W/ CENTER GRILL, EGRESS

DOOR SCHEDULE			
MARK	WIDTH	HEAD HT.	DESCRIPTION
1	3' - 0"	6' - 8"	ENTRY
2	5' - 0"	6' - 8"	DOUBLE POCKET
3	5' - 0"	6' - 8"	DOUBLE POCKET
4	2' - 6"	6' - 8"	LOUVERED
5	2' - 6"	6' - 8"	HOLLOW CORE
6	2' - 6"	6' - 8"	HOLLOW CORE
7	3' - 0"	6' - 8"	BI-FOLD, LOUVERED CLOSET
8	2' - 6"	6' - 8"	HOLLOW CORE
9	4' - 6"	6' - 8"	BI-FOLD, LOUVERED CLOSET
10	4' - 6"	6' - 8"	BI-FOLD, LOUVERED CLOSET
11	2' - 8"	6' - 8"	BI-FOLD, LOUVERED CLOSET
12	2' - 6"	6' - 8"	HOLLOW CORE



1 FINISH FLOOR
1/4" = 1'-0"

Job No. 010208-FF

Date: 3-3-08

Allen Associates and Winsor DesignPlan expressly reserve their common law copyright and other property rights in these drawings. These drawings are not to be reproduced, changed or copied in any form or manner whatsoever not as they to be assigned to any third party without first obtaining the approval written permission and consent of Allen Associates and/or Winsor DesignPlan.

REVISION SCHEDULE

NO.	DESCRIPTION	DATE

FLOOR PLAN

A-1.0

Scale 1/4" = 1'-0"